



BAIT-UL-SUKOON  
CANCER HOSPITAL & HOSPICE

Be That Ray of Hope and Help Fight Cancer!

# Bait-ul-Sukoon

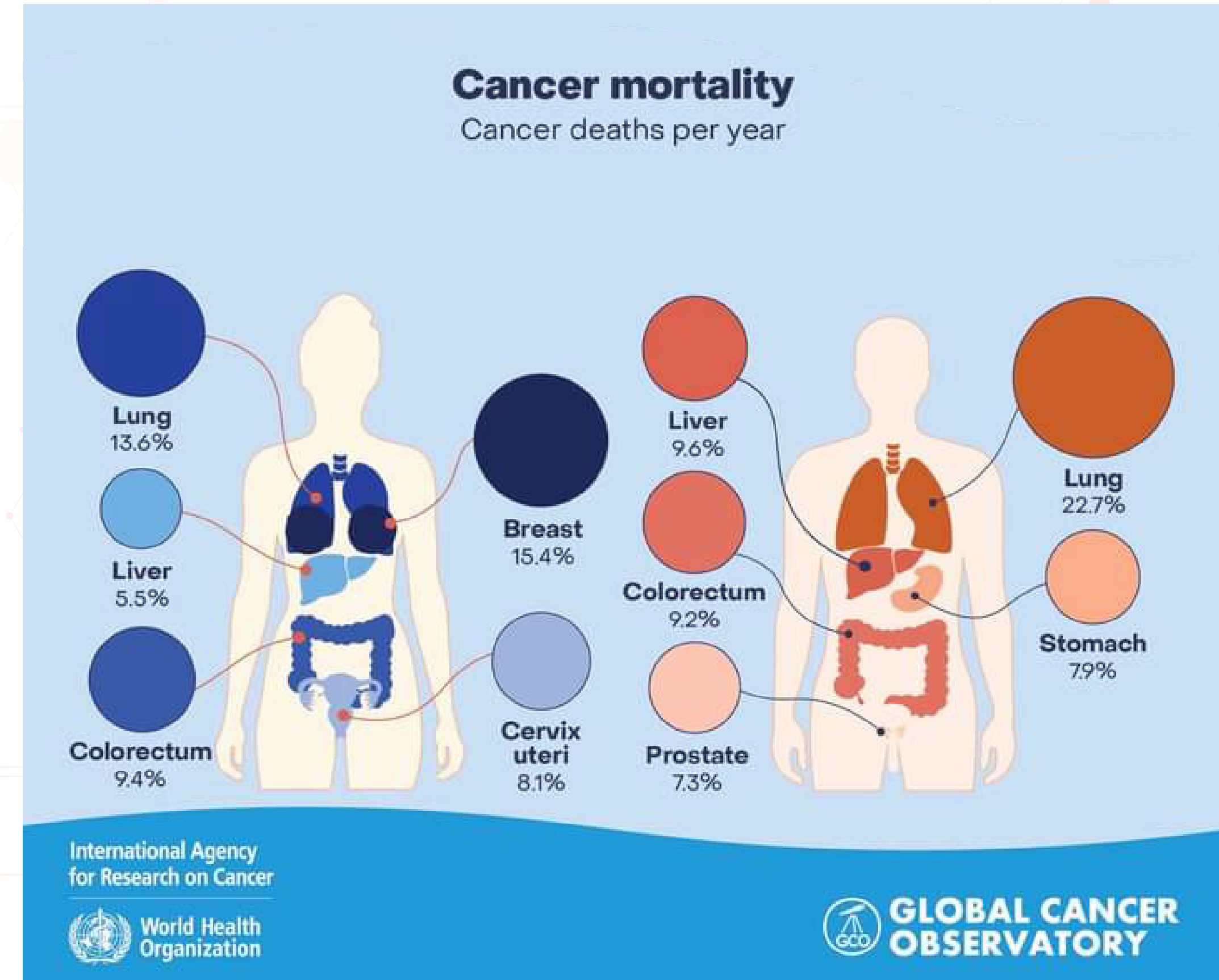
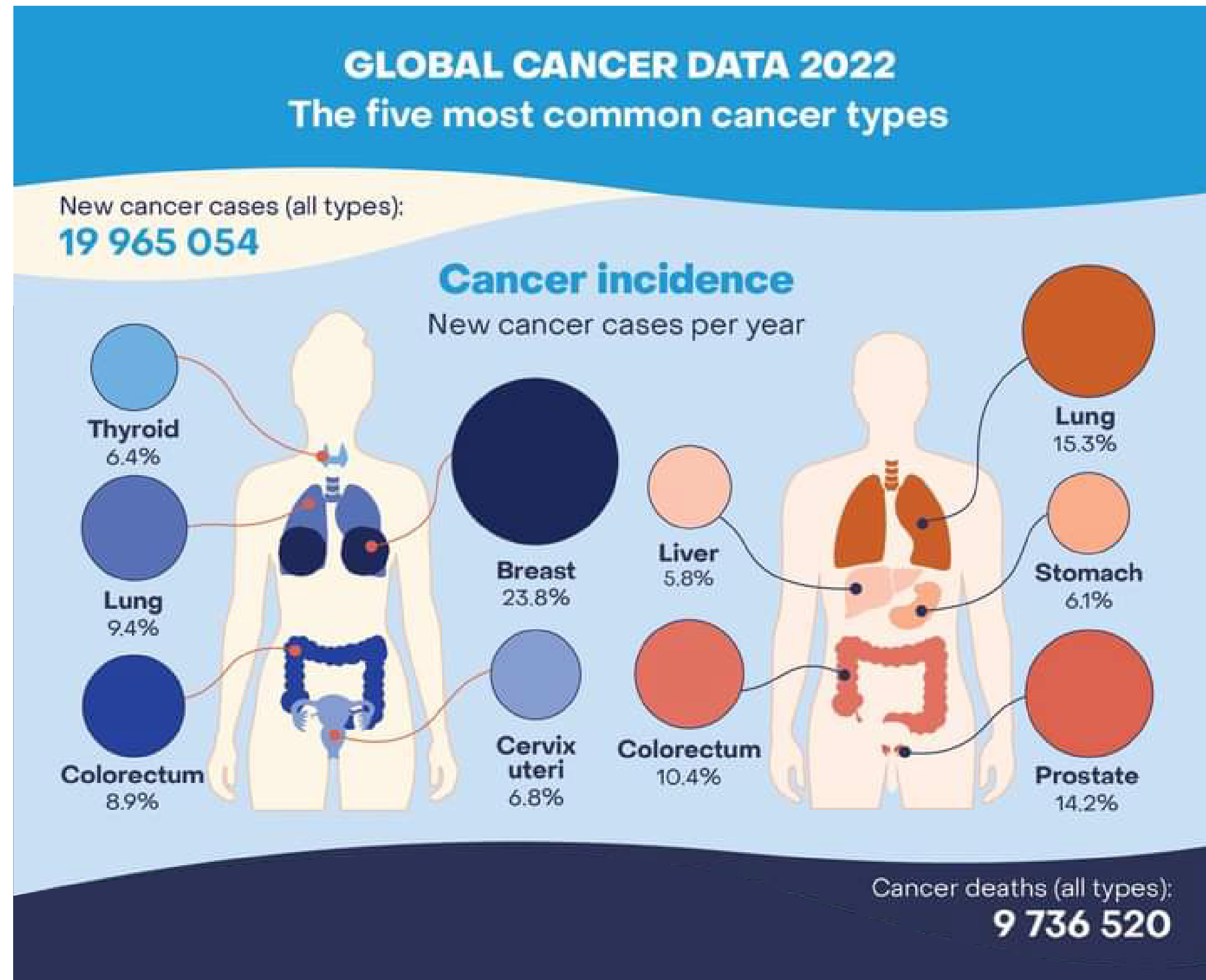
## Cancer Hospital & Hospice

Website: <https://baitulsukoon.org/>

# DID YOU KNOW?



BAIT-UL-SUKOON  
CANCER HOSPITAL & HOSPICE



# DID YOU KNOW?



**1 IN EVERY 9**  
WOMEN IN PAKISTAN IS  
LIKELY TO SUFFER FROM  
**BREAST CANCER**  
IN HER LIFETIME\*



BAIT-UL-SUKOON  
CANCER HOSPITAL & HOSPICE

**EARLY DETECTION  
CAN SAVE YOUR LIFE**

*\*AMERICAN CANCER SOCIETY*

Donate to save a life

+92-21-34553834

[www.baitulsukoon.org](http://www.baitulsukoon.org)



## DID YOU KNOW?

### **Bait ul Sukoon**

established in 1999, is the only Cancer Hospital in Pakistan with a Hospice providing **Free Treatment to Cancer patients** so as to fight it with hope, dignity and solace without any financial anxiety.





آغا خان یونیورسٹی ہسپتال  
The Aga Khan University Hospital



BAIT-UL-SUKOON  
CANCER HOSPITAL & HOSPICE

## DID YOU KNOW?

**AKU** has partnered with  
**Bait ul Sukoon Trust,**  
enabling its faculty to volunteer  
their expertise/services in helping  
BSCHH provide free of cost  
quality services to the cancer  
patients.





## DID YOU KNOW?

Our medical team comprises of leading **Surgeons** and **Oncologists** dedicated to advancing cancer treatment to the less privileged.





## DID YOU KNOW?

Bait ul Sukoon is a purpose built hospital with **modern** and **state-of-the-art** **Operation Theatre** with fully equipped **Recovery Room / HDU (5 beds)**.



## DID YOU KNOW?

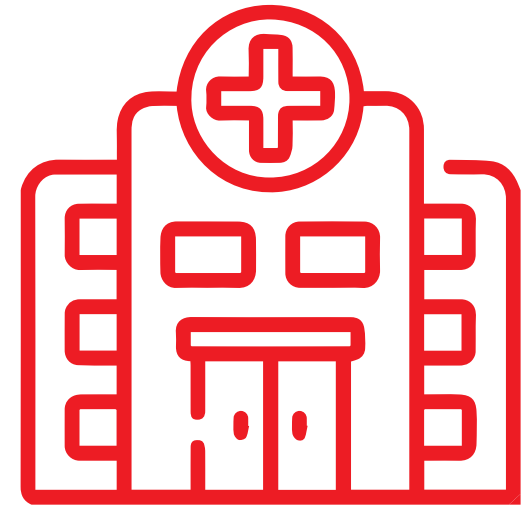
**Bait ul Sukoon has  
no cash counters**

We welcome all patients,  
irrespective of caste, creed,  
religion or ethnic background.



Our patients come from cities across  
**Pakistan** and **Afghanistan**.





# Our Story

Bait-ul-Sukoon Cancer Hospital and Hospice (BSCHH), managed & operated by Bait-ul-Sukoon Trust was established in 1999 as a Hospice.

Today, by the grace of Allah and with the help of our blessed donors, we have transformed it into a state-of-the-art facility operating as a fully functioning 73-bedded Cancer Hospital and Hospice, offering 100% Free Cancer Treatment to all its Patients with Dignity and in Solace.



# Our Services

**Breast Clinic**

**Surgical Oncology**

**Chemotherapy**

**Radiotherapy**

**Supportive  
Management**

**Physiotherapy**

**Psychological  
Counselling**

**Hospice Support**

**Radiology**

**Pathology**

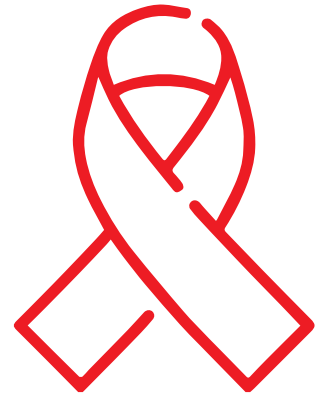
**Mammogram**

**Screening**

**Harmonal  
Therapy**

**Dietician**

**Awareness  
Programs and  
In-house Pharmacy**



# Types of Cancer Treated

**Breast**

**Cervix**

**Ovarian**

**Uterine**

**Prostrate**

**Anal**

**Rectum**

**Sigmoid**

**Colon**

**Duodenal**

**Esophagus**

**Hodgkin  
Lymphoma**

**Non-Hodgkin  
Lymphoma**

**Liver (HCC)**

**Stomach**



# Outreach Services

	July 20 to June 2021	June 2021	July 21 to June 2022	June 2022	Increase % 2021-2022	July 22 to June 2023	June 2023	Increase % 2022-2023	Increase % 2021-2023
Registered Patients	3,126	39,250	3,695	42,945	18%	4,307	47,252	17%	38%
OPD Cases	15,300	215,404	23,251	238,655	52%	26,416	265,071	14%	73%
Chemotherapy Patients	3,139	29,652	5,224	34,876	67%	9,791	44,667	87%	212%
Chemotherapy (Sessions)	18,834	177,912	31,344	209,256	67%	58,746	268,002	87%	212%
Radiotherapy Patients	580	5,953	464	6,417	↓	394	6,811	↓	↓
Radiotherapy (Fractions)	14,500	138,079	11,600	149,679	↓	9,850	159,529	↓	↓
Surgeries	134	4,597	262	4,859	96%	277	5,136	6%	107%
Hospice Patients (12 Beds)	4,380	10,034	4,380	14,414	Full Capacity	4,380	18,794	Full Capacity	Full Capacity



# Annual Operating Cost

	July 21 to June 2022	July 22 to June 2023	July 23 to June 2024	Increase %	Gross%
	Audited (PKR)	Audited (PKR)	Budgeted (PKR)	2023-2024	2023-2024
Patient Care Expenses	145,208,753	174,173,711	240,917,277	20%	82%
Support Expenses	23,490,427	27,653,699	30,584,689	18%	10%
Administrative Expenses	20,894,206	17,702,282	22,280,077	15%	8%
<b>Grand Total</b>	<b>189,593,386</b>	<b>219,529,692</b>	<b>293,782,043</b>	<b>16%</b>	<b>100%</b>

**Note:**

Monthly approx. 9 patients of Ovarian Cancer @ Rs. 150,000/- per patient

\* Increase in Patient Care Expenses has been budgeted in 2024 with the inclusion of approx. cost of “Ovarian-Uterine” Surgeries amounting to Rs 16.20m per annum.



# Financial Analysis

<b>Income</b>	<b>2021 to 2022</b>	<b>2022 to 2023</b>	<b>2023 to 2024</b>
	<b>Audited (PKR)</b>	<b>Audited (PKR)</b>	<b>Budgeted (PKR)</b>
Donations, Zakat & Other charities	127,971,493	147,268,091	250,000,000
Return on Investments	69,264,768	108,261,601	120,000,000
<b>Total Income</b>	<b>197,236,261</b>	<b>255,529,692</b>	<b>370,000,000</b>
<b>Expenditure</b>			
Patient care Expenses	145,208,753	174,173,711	240,917,277
Support Expenses	23,490,427	27,653,699	30,584,689
Administrative Expenses	20,894,206	17,702,282	22,280,077
<b>Sub Total</b>	<b>189,593,386</b>	<b>219,529,692</b>	<b>293,782,043</b>
Other Addl. Medications (Restricted)	45,000,000	59,328,000	148,320,000
<b>Shortfall</b>	<b>(37,357,125)</b>	<b>(23,328,000)</b>	<b>(72,102,043)</b>



# Investment Analysis

	Investments (PKR)	Annual Income (PKR)
Endowment	500,000,000	107,900,000
General Fund	323,423,859	58,437,300
<b>Total</b>	<b>823,423,589</b>	<b>166,337,300</b>



# Funds Requirements for 2023-24

			Million (PKR)
<b>Budgeted Expenses</b>			
Existing Project	Chemotherapy, Radiotherapy, Surgeries & Others		291
New Project	Targeted Therapy for 384 patients		198
<b>Total</b>			<b>489</b>
<b>Expected Collections</b>			
Recurring Annual Donations			82
Ramzan Donations & Zakat			80
Return on Investments - Income			146
<b>Total</b>			<b>308</b>
<b>Expected Shortfall</b>			<b>181</b>



# Targeted Therapy



**FOR BREAST CANCER ( 17 doses required for every Patient) – This treatment is for patients up to stage II Cancer and 45 years of age**

Injection	Cost / Patient (USD)	Patients / Month	Cost / Month (USD)	Total Cost / Yr (USD)	Total Patients / Yr
HERCEPTIN	2,982	20	59,640	715,680	20 X 12 = 240 Patients
OR	OR		OR	OR	
TRANZAPTIN	2,684	20	53,680	644,160	
OR	OR		OR	OR	
TRASTUGET	2,386	20	47,720	572,640*	

**FOR LYMPHOMA CANCER (6 doses required for every Patient) – This treatment is for patients up to stage II Cancer and 45 years of age**

Injection	Cost / Patient (USD)	Patients / Month	Cost / Month (USD)	Total Cost / Yr (USD)	Total Patients / Yr
RESTOVA	1,390	12	16,680	200,160	12 X 12 = 144 Patients
OR	OR		OR	OR	
RETUXAN	842	12	10,104	121,248	
OR	OR		OR	OR	
TUXMAB	842	12	10,104	121,248*	

**Total Annual Expenditure for "Targeted Therapy" with the above medications for 32 patients / month or 384 patients / year would be \*USD 693,888/-**



# Hospice

Bait-ul-Sukoon provides Hospice care to terminally ill patients of late 4th stage cancer requiring pain management. It is a special kind of care that focuses on the quality of life for people and their caregivers who are experiencing an advanced, life-limiting illness.

We provide Palliative care and system control to these patients, compassionate care for the people in the last phases of incurable disease, so that they may live as fully and comfortably as possible. Hospice care treats the symptoms of the disease and not the disease itself and affirms life with comfort in the final stage but does not try to hasten or postpone death.

A team of professionals work together to manage symptoms so that a person's last days may be spent with dignity, surrounded by their loved ones. Hospice care is also family-centered – it includes the patient and the family in making decisions.

**BSCHH has almost 100% occupancy rate for the 12 beds allocated for hospice care. Monthly cost per bed per month of the hospice care is Rs 120,000 and the annual cost is around Rs 17m.**



BAIT-UL-SUKOON  
CANCER HOSPITAL & HOSPICE



# Research Partners

IBM has gifted **Statistical Package for Social Sciences (SPSS)** Research & Analysis software costing around US\$ 92,000 to Bait ul Sukoon.

IBM SPSS Statistics is a powerful statistical software platform with robust set of features that lets organisations quickly extract actionable insights from their data.

BSCHH has data of over 25,000 patients, which can be used for analysis and also providing the much sought after data for local and international research on cancer and its treatments to feature in the international medical journals. This would lead to recognition of BSCHH internationally, as well as funding to adopt the best medication techniques for its patients, at different stages with the use of Artificial Intelligence (AI).



# Research Partners **R&M**

**Bait ul Sukoon Cancer Hospital & Hospice** has partnered with **DRM-Pharma & Diagnostik GmbH** for advanced medical research.

Renowned for healthcare innovation, DRM-Pharma offers tailored solutions spanning Pharma & Diagnostic Products Services, Consulting, and Outsourcing.

This partnership marks a significant step towards revolutionizing cancer patient care and treatment by combining the expertise and resources of both institutions. We aim to pioneer groundbreaking research initiatives that will reshape the landscape of healthcare by introducing cutting-edge solutions tailored to meet the evolving needs of cancer patients, ensuring improved outcomes and enhanced quality of life, **especially for the underprivileged patients.**



# Sponsor a Treatment/Service

	Medical Services	Sponsorship Cost (USD) - @ Rs. 285/- each
1	<b>Chemotherapy</b> (Average Sessions per patient - 16)	\$88/- (Per Session) = \$1,408/- (Per Patient)
2	<b>Targeted Therapy</b> (Average Sessions per patient - 16)	\$140/- (Per Session) = \$2,240/- (Per Patient)
3	<b>Radiotherapy</b> (Average Fractions per patient - 16)	\$16/- (Per Fraction) = \$256/- (Per Patient)
4	<b>Surgery</b> (incl. reconstruction of breast)	\$351/- (Breast) - \$526/- (Ovarian)
5	<b>Hospice Care</b>	\$20/- (Per Patient Per Day ) = \$597/- (Per Bed Per Month)
6	<b>Biopsy</b>	\$18/- (Per Patient Per Procedure)
7	<b>Histopathology</b>	\$88/- (Per Patient Per Examination)
8	<b>Diagnostic Pathology</b>	\$9/- (Per Patient Per Examination)
9	<b>Advanced Diagnostic Radiology</b>	MRI (Contrast \$84/-)   CT Scan: (Chest \$49/-) & (Abdomen \$70/-) Mammography (\$25/-)   X-Rays (\$5/-)   Ultrasound (\$14/-)



BAIT-UL-SUKOON  
CANCER HOSPITAL & HOSPICE

**Together, let's revive the Hope to fight Cancer with Dignity & in Solace!**



### Banking Partners:



BankIslami

### Online Payment Partners:



I-CARE FOUNDATION

International



PayPro

Local

### Social Media Presence:

 baitulsukoonHospital  baitulsukoon  baitulsukoon  baitulsukoonhospital  BaitulSukoonCancerHospital  baitulsukoonhospital